



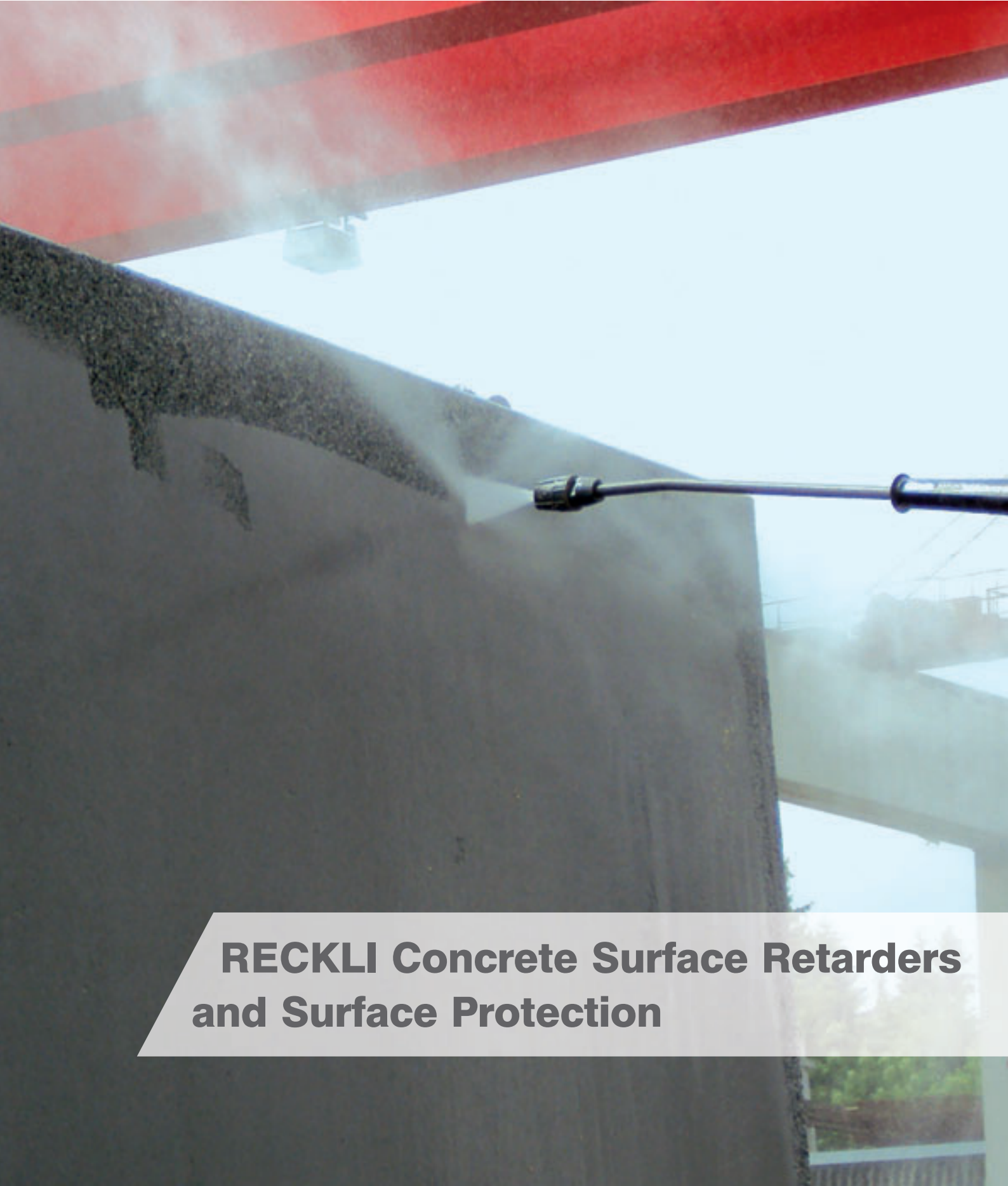
Formliners

Mould making Technique

Resins for Mould and Pattern making

Concrete Surface

DESIGN YOUR CONCRETE



**RECKLI Concrete Surface Retarders
and Surface Protection**

RECKLI CR Type N – Concrete Surface Retarder

For the production of premium exposed aggregate concrete, available in different washing depths

RECKLI CR Type N

is a solvent-based concrete surface deactivating agent used to produce fine to coarse exposed aggregate concrete using the negative or positive process. RECKLI CR Type N is available in twelve different washing depths.

Benefits:

- Homogeneous washing pattern
- Quick and easy washing
- Low consumption
- Very short drying time
- Easy formwork cleaning

Areas of Application:

- Architectural façade elements
- Precast concrete elements
- Cast-in-place concrete elements
- Roughening of separating joints
- Cast stone and general concrete products

Please follow the instructions of the corresponding technical data sheet when applying the product.



RECKLI CR Type N	Colour	Aggregate size	Washing depth
N/Mikro	turquoise	0-3 mm	Approx. 0.2 mm
N/01	blue	0-4/8 mm	Approx. 0.5 mm
N/02	brown	2-4/8 mm	Approx. 1.0 mm
N/10	green	4-8/10 mm	Approx. 1.5 mm
N/25	yellow	4-8/10 mm	Approx. 2.0 mm
N/50	red	6-9/12 mm	Approx. 2.5 mm
N/80	grey	8-12 mm	Approx. 3.0 mm
N/100	mustard	8-16 mm	Approx. 3.5 mm
N/130	white	12-16 mm	Approx. 4.0 mm
N/200	orange	16-22 mm	Approx. 5.0 mm
N/300	red-violet	16-22 mm	Approx. 6.0 mm
N/400	blue-violet	18-25 mm	Approx. 7.0 mm

Washing depths are approximate only. They depend on the cement grade, w/c ratio, aggregate mix and powder ratio. We will be pleased to assist you with the selection of the most appropriate type.



apply the retarder



pour the concrete



wash out



finished element

RECKLI CR Type PV – Concrete Surface Retarder

For the production of premium exposed aggregate concrete products, suitable for the positive process

RECKLI CR Type PV

is an aqueous concrete surface deactivating agent used to produce fine to coarse exposed aggregate concretes applying the positive process. Its particular feature is its integrated sealing compound, which serves as an effective means to protect the early-strength concrete against premature moisture release and weather impact, as well as against any other actions that may have a deleterious effect on the concrete structure. This sealing compound is required to ensure uniform build-up of strength in the concrete. Our RECKLI CR Type PV range is available in eleven different washing depths.

Benefits:

- Homogeneous washing pattern
- Very easy washing
- Low consumption
- Sprayable
- Low odour, Environmentally friendly

Areas of Application:

- Cast stone, Concrete road pavements
- Roughening separating joints
- Concrete pavers, Cast-in-situ areas

One coat of the easy-to-stir RECKLI CR Type PV is applied to the fresh concrete using an airless or hydraulic sprayer, ensuring good coverage. The washing process is usually carried out five hours to three days after application of the agent.

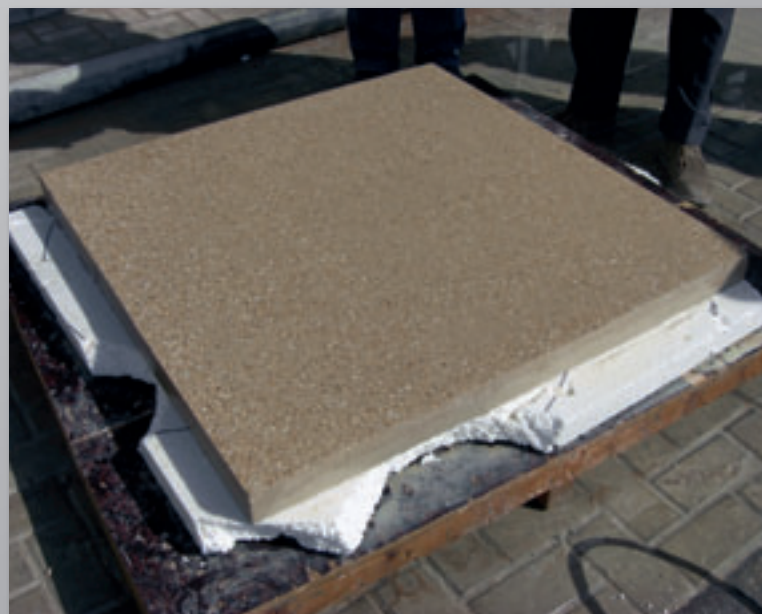
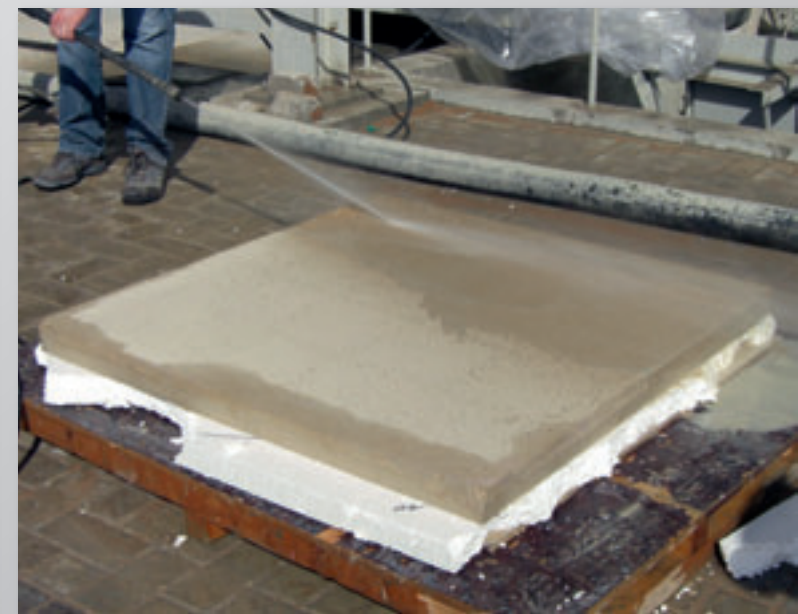
Please follow the instructions of the corresponding technical data sheet when applying the product.

RECKLI CR Type PV	Colour	Aggregate size	Washing depth
PV/Mikro	turquoise	0-3 mm	Approx. 0.2 mm
PV/01	blue	0-4/8 mm	Approx. 0.5 mm
PV/02	brown	2-4/8 mm	Approx. 1.0 mm
PV/10	green	4-8/10 mm	Approx. 2.0 mm
PV/25	yellow	6-8/10 mm	Approx. 2.5 mm
PV/50	red	8-16 mm	Approx. 3.0 mm
PV/80	grey	8-16 mm	Approx. 4.0 mm
PV/100	mustard	12-16 mm	Approx. 5.0 mm
PV/130	white	12-16 mm	Approx. 5.5 mm
PV/200	orange	18-25 mm	Approx. 6.5 mm
PV/300	violet	18-25 mm	Approx. 7.0 mm

Washing depths are approximate only. They depend on the cement grade, w/c ratio, aggregate mix and powder ratio. We will be pleased to assist you with the selection of the most appropriate type.



apply the retarder on fresh concrete



wash out

finished element

RECKLI – Acidifiers

Just recently, the finishing of concrete element surfaces with washing microgels has become popular again. In the so-called acid-edging process, only the cement crust is acidified artificially so that the texture resembles the appearance of a sand-stone surface.

RECKLI CemGel K

is a viscous, gel-like product consisting of surface-active acids that is used to achieve a micro-washing effect or slightly roughened concrete surfaces.

Preferably using a soft broom, the easy-to-stir RECKLI CemGel K is applied to the concrete, which, ideally, should have been poured two to three days before and pre-wetted. The process can be repeated several times to achieve greater washing depths.

Benefits:

- Quality on a consistently high level
- High-quality acids
- Low odour
- No drip formation on vertical surfaces
- Very low sulphate content = lower concentrations in wastewater

Areas of Application:

- Cast stone
- General concrete products
- Architectural façade elements
- Precast concrete elements
- Cast-in-place concrete elements

RECKLI CemGel KS

is suitable for the same fields of application and has the same benefits as RECKLI CemGel K, but has a higher concentration of surface-active acids. For this reason, this product is applied wherever a deeper acidification is desired right from the beginning, or whenever older concrete elements need to be acid-washed.

Please follow the instructions of the corresponding technical data sheet when applying the product.



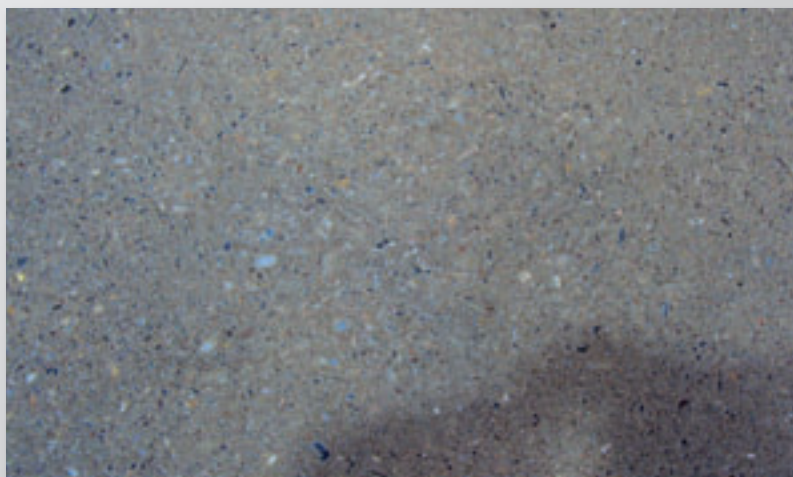
apply the cemgel with a soft broom



wash out



finished element



RECKLI – Surface protection systems

RECKLI surface protection systems are used to provide protection against moisture penetration and/or other chemical actions, for example on precast concrete façades, cast stone structures, terrazzo floors, and in bridge and tunnel construction.

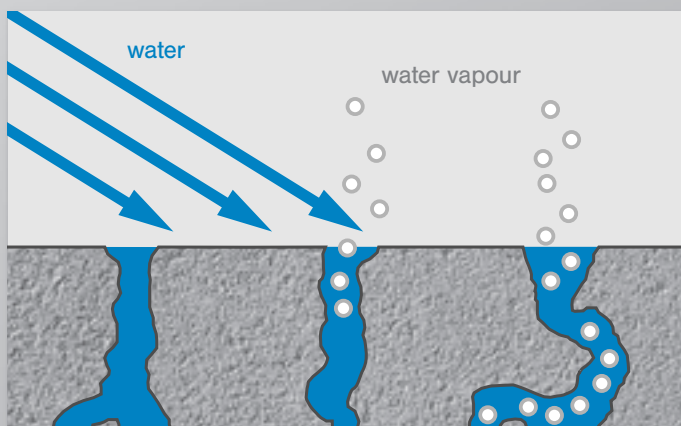
The main cause of weathering and damage to buildings is water because it promotes the penetration of concrete surfaces by pollutants, micro-organisms and salts, which, in turn, may lead to severe damage to the building fabric over time.

With our products, we contribute to protecting concrete in the long term in accordance with the specifications defined by the client whilst also creating special visual effects if so requested.

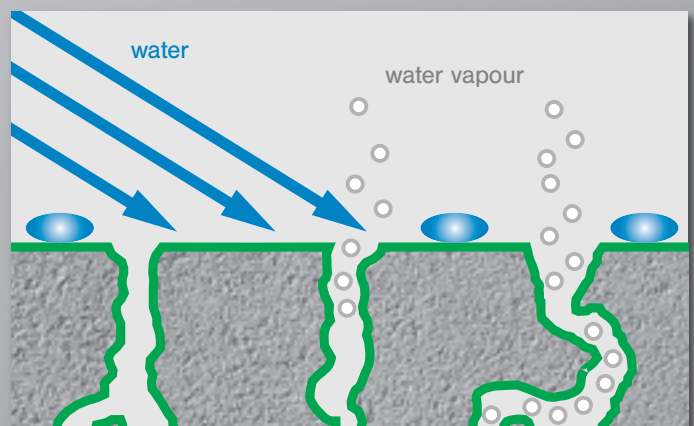


Clear Impregnation	Properties	Area of Application
RECKLI-OS-Premium Solvent-Based Hydro and Oleophobic concrete impregnation liquid. Based on nanotechnology.	UV-Resistant and water vapour permeable. Reduces the penetration of aqueous and oily pollution into the building fabric. Reduces the appearance of sill drips and runs. Reduces efflorescence and damage caused by freeze/thaw action.	Suitable for every kind of new and old concrete surfaces. Sand/cement renders, brick, concrete blockwork and natural stones such as sandstone, limestone, granites, etc.
RECKLI-OS-HO Aqueous Hydro and Oleophobic concrete impregnation liquid. Based on fluorocarbon resin (Teflon)	UV-Resistant and water vapour permeable. Reduces the penetration of aqueous and oily pollution into the building fabric. Reduces the appearance of sill drips and runs. Reduces efflorescence and damage caused by freeze/thaw action.	Suitable for every kind of new and old concrete surfaces. Sand/cement renders, brick, concrete blockwork and natural stones such as sandstone, limestone, granites, etc.
RECKLI-OS-D Aqueous Hydrophobic concrete impregnation liquid. Based on Silane/Siloxane (silicone)	UV-Resistant, reduces the penetration of aqueous pollution into the concrete. Reduces the appearance of sill drips and runs. Reduces efflorescence and damage caused by freeze/thaw action.	Suitable for every kind of new and old concrete surfaces.

Opaque Impregnation	Properties	Area of Application
RECKLI-OS-Intensiv Aqueous and Pore Filling for all concrete surfaces. Based on a Polyacrylic. For a silky gloss concrete surface and a colour-intensifying effect.	UV-Resistant. Reduces the penetration of aqueous pollution into the concrete, reduces the appearance of sill drips and runs. Reduces efflorescence and damage caused by freeze/thaw action.	For any absorbent concrete finishes i.e. acid wash and sand blasted and retarded finishes, kerbstones, paving slabs etc. Can be applied to newly demoulded concrete.
RECKLI-OS-W Aqueous and Pore Filling for all concrete surfaces. Polymer based. Gives a silky/matt gloss finish to the concrete surface.	UV-Resistant. Reduces the penetration of aqueous pollution into the concrete. Reduces the appearance of sill drips and runs. Reduces efflorescence and damage caused by freeze/thaw action. Strengthens the concrete surface.	For any absorbent concrete such as acid etch, sandblasted and retarded finishes. Can be applied to newly demoulded concrete, sand/cement render, brick and natural stone.



untreated surface



surface impregnated



Formliners
Mould making Technique
Resins for Mould and Pattern making
Concrete Surface

DESIGN YOUR CONCRETE

RECKLI GmbH

Adresse/Address: Eschstraße 30 44629 Herne Germany Tel. +49 2323 1706-0 info@reckli.de
Postadresse/Mailing Address: Postfach 1013 29 44603 Herne Germany Fax +49 2323 1706-50 www.reckli.de

